

PARTS LIST

DESCRIPTION	PART #	QUANTITY
ANTI-ENTRAPMENT COVER	AV26X26	1
1/4" GROUND LUG SCREW	BB02507-5000	1
1/4" S/S DROP-IN ANCHOR	SBCA025-316L	4
1/4" SOC. HEAD SCREW 3/8" LG.	SSSC252-0625L	4
ANCHOR SETTING TOOL	SBCA025-TDOL	1
ANTI-SEIZE LUBRICANT	SBANTI-SEIZE	1
CAULKING	FE0CM00-6510	1
PLASTIC HOLE PLUGS	FE50000-0750	4
1/4" STUD ANCHORS	SBSA025-2253	4

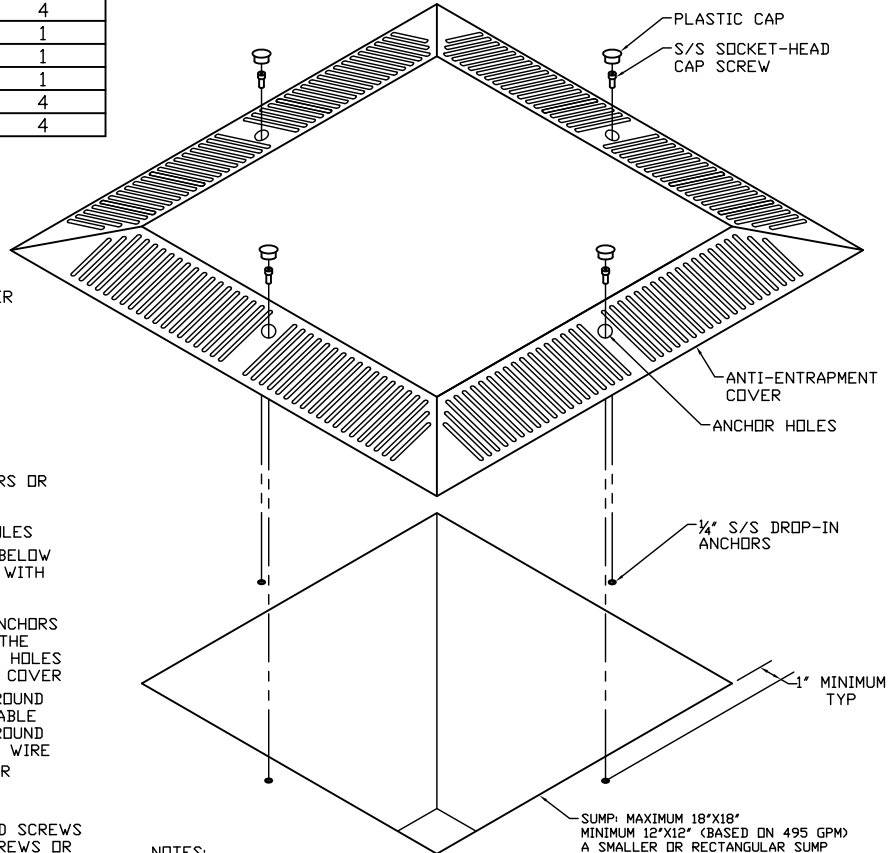
TOOLS REQUIRED FOR INSTALLATION

- | | | |
|--|----|--|
| <p>1/4" DROP-IN ANCHORS</p> <ol style="list-style-type: none"> 1. CONCRETE DRILL 2. $\phi 3/8$" CONCRETE DRILL BIT 3. $3/16$" ALLEN WRENCH 4. PENCIL OR MARKER 5. HAMMER 6. DROP-IN SETTING TOOL (PROVIDED) | OR | <p>1/4" STUD ANCHORS</p> <ol style="list-style-type: none"> 1. CONCRETE DRILL 2. $\phi 1/4$" CONCRETE DRILL BIT 3. $7/16$" SOCKET AND WRENCH 4. PENCIL OR MARKER 5. HAMMER |
|--|----|--|

INSTALLATION INSTRUCTIONS FOR

1/4" DROP-IN ANCHORS AND 1/4" STUD ANCHORS

1. PLACE NEW ANTI-ENTRAPMENT COVER IN PLACE
2. MARK LOCATIONS OF ANCHOR HOLES LEAVING MINIMUM 1" OF CONCRETE BETWEEN SUMP WALL AND LOCATION TO BE DRILLED
3. DRILL $\phi 3/8$ " HOLES 1" DEEP FOR DROP-IN ANCHORS OR DRILL $\phi 1/4$ " HOLES 2" DEEP FOR STUD ANCHORS CHECK MARKS AFTER EACH HOLE IS DRILLED (DRILL BIT MAY WALK) CLEAN DEBRIS FROM HOLES
4. INSERT DROP-IN ANCHORS FLUSH OR SLIGHTLY BELOW THE CONCRETE AND STRIKE THE INTERNAL PIN WITH THE PROVIDED SETTING TOOL
--OR--
ASSEMBLE NUTS AND WASHERS ON THE STUD ANCHORS FLUSH WITH THE END OF THE THREADS, WITH THE COVER IN PLACE HAMMER THE STUDS INTO THE HOLES DO NOT TIGHTEN, REMOVE NUTS, WASHERS AND COVER
5. ATTACH THE GROUNDING LUG TO A SUITABLE GROUND (IF REQUIRED) A POTTING COMPOUND IS AVAILABLE FROM YOUR SUPPLIER TO ENCAPSULATE ALL GROUND CONNECTIONS BETWEEN S/S AND 8 GA. COPPER WIRE
6. PUT COVER IN PLACE, TRACE AROUND PERIMETER PLACE ROPE CAULKING AROUND PERIMETER 75% OUTSIDE OF THE LINE
7. APPLY ANTI-SEIZE LUBRICANT TO THE PROVIDED SCREWS OR STUDS AND TIGHTEN COVER DOWN WITH SCREWS OR THE NUTS IF STUD ANCHORS ARE USED. LONGER SCREWS CAN BE PROVIDED IN NEEDED DUE TO AN UNEVEN FLOOR
8. INSERT PLASTIC CAPS IN ALL SCREW HOLES
9. MOLD CAULKING AROUND COVER TO FILL ANY GAPS, TRIM EXCESS CAULKING WHERE POSSIBLE IF NEEDED, CHECK COVER AND CAULKING BEFORE EACH USE OF THE FACILITY, REPLACE CAULKING IF GAPS BECOME PRESENT OR CAULKING BEGINS TO DETERIORATE



NOTES:
 IF THIS COVER IS USED IN A SINGLE SUMP APPLICATION A SECONDARY SAFETY SYSTEM WILL BE REQUIRED

 IF GAPS OCCUR BETWEEN THE COVER AND POOL FLOOR GREATER THAN 1/4", USE AN EPOXY PATCHING COMPOUND TO FILL THE GAP AND MOLD INTO A SMOOTH TRANSITION

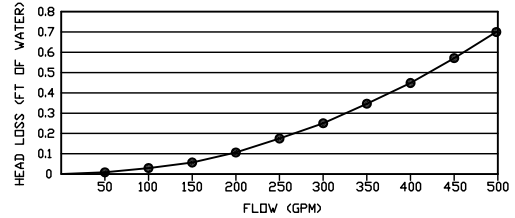
SUMP: MAXIMUM 18"x18"
 MINIMUM 12"x12" (BASED ON 495 GPM)
 A SMALLER OR RECTANGULAR SUMP MAY BE POSSIBLE CONTACT DEALER FOR MORE INFORMATION

AV26X26 ANTI-ENTRAPMENT COVER INFORMATION
READ AND UNDERSTAND COMPLETELY BEFORE INSTALLATION
FAILURE TO DO SO CAN CAUSE SEVERE INJURY AND/OR DEATH

1. THIS COVER WAS TESTED AND IS CERTIFIED TO ANSI/APSP-16 2011 STANDARDS
2. MANUFACTURED BY EUREKA MANUFACTURING, MODEL NUMBER AV26X26, MAXIMUM FLOW RATING IS 495 GPM
3. CLASSIFICATION IS "SUBMERGED SUCTION OUTLET" AND IS APPROVED FOR FLOOR AND WALL INSTALLATIONS COVER MUST BE INSTALLED ON A SUMP THAT MEETS FIG. 2 DIMENSIONS IN THE ANSI/APSP-16 2011 STANDARD
4. THIS DESIGN IS MADE TO FIT OVER AN EXISTING MAIN DRAIN, REMOVE ALL PRESENT GRATING AND HARDWARE TO PREVENT AN ENTANGLEMENT HAZARD, MAXIMUM SUMP SIZE = 18"x18" (SEE MIN SIZE NOTE ABOVE)
5. DO NOT LOCATE SUCTION OUTLET ON SEATING AREA OR ON THE BACK RESTS FOR SUCH SEATING AREAS
6. REPLACE HARDWARE WITHIN 10 INSTALLED YEARS. REPLACE COVER ITSELF WITHIN 20 INSTALLED YEARS
7. WHEN TWO OR MORE SUCTION FITTINGS ARE USED ON A COMMON SUCTION LINE THEY MUST BE SEPARATED BY A MINIMUM OF 3' (91.44 CM) OR POSITIONED ON TWO SEPARATE PLANES
8. IN THE EVENT OF ONE SUCTION OUTLET BEING COMPLETELY BLOCKED, THE REMAINING SUCTION OUTLETS SERVING THE SYSTEM SHALL HAVE A FLOW RATING CAPABLE OF THE FULL FLOW OF THE PUMP(S) FOR THE SPECIFIC SUCTION SYSTEM
9. THE SUCTION OUTLET SHOULD BE CHECKED FOR DAMAGE OR TAMPERING BEFORE EACH USE OF THE FACILITY
10. MISSING, BROKEN, OR CRACKED SUCTION OUTLETS SHALL BE REPLACED BEFORE USING THE FACILITY
11. LOOSE SUCTION OUTLETS SHALL BE REATTACHED OR REPLACED BEFORE USING THE FACILITY
12. WHEN REPLACING THE PUMP, MAKE SURE NOT TO EXCEED THE MAXIMUM FLOW RATE FOR THE SUCTION OUTLET

Facility	Signature	Date
ANTI-ENTRAPMENT COVER INSTALL	Scale NONE	Drawing No. AV26X26 INSTALL
Date 5-20-09	Drawn AKP	Rev. A 10-19-11
Chk.		PAGE 1 OF 2

13. SERVICE AND WINTERIZING INSTRUCTIONS: CHECK CAULKING AND COVER DAILY WHILE POOL IS IN USE, IF COVER SHOULD BECOME LOOSE TIGHTEN SOCKET-HEAD SCREWS OR REINSTALL COVER
14. ACCEPTABLE CONNECTING PIPE SIZES ARE 4", 6", 8", AND 10"
15. DO NOT EXCEED THE MAXIMUM ALLOWABLE FLOW OF 495 GPM
16. READ, THEN KEEP THESE INSTRUCTIONS FOR FUTURE REFERENCE



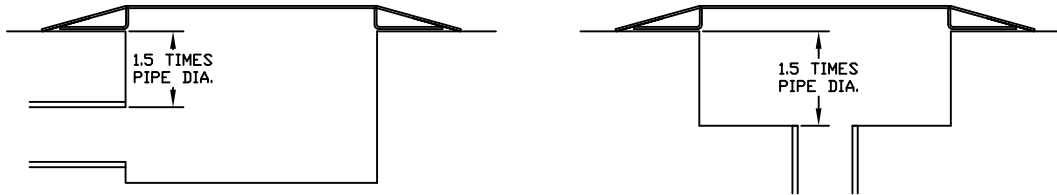
THIS STAINLESS STEEL COVER ASSEMBLY SHALL BE GUARANTEED BY THE MANUFACTURER FOR WORKMANSHIP AND MATERIALS FOR A PERIOD OF ONE (1) YEAR. COVER IS MORE SUSCEPTIBLE TO CORROSION IF IT IS NOT GROUNDED. CLEANING THE COVER TO PRESERVE THE FINISH MAY BE REQUIRED AND IS NOT COVERED UNDER THE WARRANTY. THE WARRANTY WILL NOT INCLUDE ABUSIVE OR IMPROPER TREATMENT OF THE COVER DURING INSTALLATION OR UNDER OPERATION. THE COMPANY SHALL HAVE NO LIABILITY TO CORRECT ANY DAMAGE CAUSED BY NEGLIGENCE, MISUSE, OR ANY OTHER EXTERNAL CAUSES. THE BUYER'S SOLE REMEDY IS REPLACEMENT OF THE PRODUCT. THERE IS NO REMEDY FOR OTHER DAMAGES INCLUDING CONSEQUENTIAL DAMAGES FOR INSTALLATION COSTS, LOST PROFITS, OR OTHER DAMAGES.

POOL INFORMATION

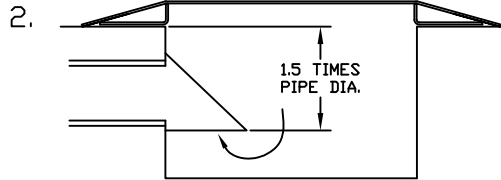
1. NUMBER OF SUMPS ON THIS SUCTION LINE _____
2. SIZE OF SUMP OPENING (S) _____
3. IS THE SUMP (S) UNDER POSITIVE SUCTION OR GRAVITY FLOW _____
4. DOES THE SYSTEM HAVE A VACUUM RELEASE SYSTEM _____
5. SIZE AND LOCATION OF PIPE IN THE SUMP _____
6. DISTANCE FROM POOL FLOOR TO THE SUCTION PIPE INLET (SEE BELOW) _____
7. GPM NEEDED ON THIS SUCTION LINE _____
8. DISTANCE BETWEEN PIPE CENTERLINES (IF MULTIPLE DRAINS) _____
9. PLEASE PROVIDE ANY ADDITIONAL INFORMATION THAT MAY BE NECESSARY OR HELPFUL _____

SUMP OPTIONS

1. FIELD BUILT SUMP (INCLUDES EXISTING SUMPS)



-DRAWINGS REFLECT ANSI/APSP-16 2011 STANDARD, ADDITIONAL RESTRICTIONS MAY APPLY



- ADD SUCTION DIVERTER
 - CONTACT YOUR SUPPLIER FOR MORE INFORMATION
 - DETAILED SUMP INFORMATION WILL BE NEEDED
- IF YOUR SUMP DOES NOT MEET THE REQUIREMENTS DESCRIBED IN FIG. 1 IT MAY BE POSSIBLE TO ADD A SUCTION DIVERTER (DEPENDING ON YOUR SUMP CONFIGURATION) FOR MORE INFORMATION ON THIS OPTION CONTACT YOUR SUPPLIER OR A LICENSED DESIGN PROFESSIONAL

3. CONTACT A LICENSED DESIGN PROFESSIONAL TO EVALUATE AND GIVE RECOMMENDATIONS FOR COMPLIANCE
4. CONTACT YOUR SUPPLIER FOR THE MANUFACTURER'S RECOMMENDED SUMP

ANY RECOMMENDATIONS ARE BASED ON INFORMATION RECEIVED. THE MANUFACTURER CANNOT BE RESPONSIBLE FOR MISINFORMATION. MANUFACTURER DOES NOT ASSUME LIABILITY FOR THE SUMP, INSTALLATION, OR MISUSE OF THE PRODUCT.

SELLER MAKES NO OTHER EXPRESS OR IMPLIED WARRANTY REGARDING THE USEFUL LIFE OF THE PRODUCT OR REGARDING THE OPERATION, USE, OR PERFORMANCE OF THE PROPERTY. SELLER SHALL HAVE NO LIABILITY TO THE BUYER OR ANY PERSON FOR ANY CLAIM, LOSS, DAMAGE, OR EXPENSE (INCLUDING ATTORNEYS FEES) OF ANY KIND OR NATURE, WHETHER SPECIAL, CONSEQUENTIAL, ECONOMIC OR OTHERWISE, CAUSED OR ALLEGED TO BE DIRECTLY, INDIRECTLY, INCIDENTALY, OR CONSEQUENTIALY BY THE PRODUCT OF ANY PART THEREOF OR BY THE INADEQUACY OF THE PRODUCT WHATSOEVER OR ANY RECOMMENDATIONS GIVEN REGARDING THE PRODUCT AND ITS USE.

Facility		Signature		Date	
ANTI-ENTRAPMENT COVER INSTALL		Scale NONE		Drawing No. AV26X26 INSTALL PAGE 2 OF 2	
Date 5-20-09	Drawn AKP	Chk.	Rev. A 10-19-11		